

# ROLL LIFTER

Custom Application Form



For pricing information: Fax completed form & contact info to (800)-356-1149

## LOAD INFORMATION:

Describe the material you are planning to lift: \_\_\_\_\_

Roll Lifter Stand Required:  Yes  No

Is The CG (center of gravity) Of The Load Between Outer Lifting Points:  
 Yes  No If No, Describe CG Location \_\_\_\_\_

Will Roll Be Lifted With A Mandrel Or Shaft:  Yes  No  
If Yes: Mandrel/Shaft Dimensions (inches)  
Min Diameter \_\_\_\_\_ Length \_\_\_\_\_ Max Diameter \_\_\_\_\_ Length \_\_\_\_\_

Will Mandrel/Shaft Turn During Lift:  Yes  No

Mandrel/Shaft Hook Type: Plate Bent Bar Pivoting Fixed

Do Hooks Require Protective Lining:  Yes  No  
If Yes:  Brass  Bronze  Urethane  Brake  Other (specify) \_\_\_\_\_  
If No, Roll I.D. Dimensions (inches): Min Diameter \_\_\_\_\_ Length \_\_\_\_\_ Max Diameter \_\_\_\_\_ Length \_\_\_\_\_

## Bundled Load Dimensions:

|        | Min (in) | Max (in) |
|--------|----------|----------|
| O.D.   |          |          |
| I.D.   |          |          |
| Length |          |          |
| Weight |          |          |

## CRANE SPECIFICATIONS:

Crane Configuration:  Single  Double

Distance Between Top Of The Load To The Crane Hook High Position(s): \_\_\_\_\_

Capacity Of The Crane(s): \_\_\_\_\_ Distance Between Cranes (if applicable): \_\_\_\_\_  
Required Duty Cycle Of The Roll Lifter: Lifts Per Hour \_\_\_\_\_ Lifts Per Day \_\_\_\_\_

Crane Classification(s):  A  B  C  D  E  F

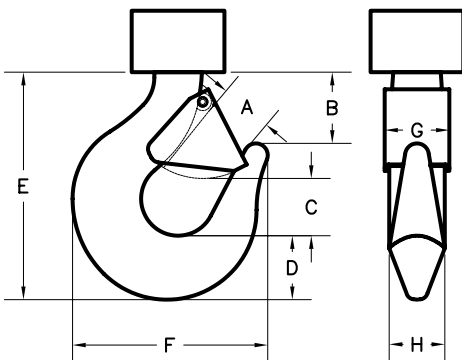
## MOTORIZED ROLL LIFTER APPLICATION:

Operation:  Manual  Motorized:  AC  DC Voltage \_\_\_\_\_ Phase \_\_\_\_\_ Cycle \_\_\_\_\_

Controls Required:  Yes  No If Yes: Specify Type \_\_\_\_\_  Furnish Loose  Mounted On Lifter

## CRANE HOOK SPECIFICATIONS (Inches) :

A: \_\_\_\_\_ B: \_\_\_\_\_ C: \_\_\_\_\_ D: \_\_\_\_\_ E: \_\_\_\_\_ F: \_\_\_\_\_ G: \_\_\_\_\_ H: \_\_\_\_\_



Please provide pertinent application information not supplied above (extreme product or operating temperature, extreme environmental conditions such as temperature or moisture, space or headroom restrictions, additional specifications):

\_\_\_\_\_

\_\_\_\_\_

\_\_\_\_\_